



107 Federal Street, Milton, Delaware 19968
miltonartsguild310@gmail.com
302.684.1500 www.miltonartsguild.org

May-Flower

**Pink, small, and punctual,
Aromatic, low,
Covert in April
Candid in May,**

**Dear to the moss,
Known by the knoll,
Next to the robin
In every human soul.**

**Bold little beauty,
Bedecked with thee,
Nature forswears
Antiquity.**

Emily Dickinson

MAG Headlines:

Student Show Reception Applauded Young Artists
MAG Talks on Selling at Markets
Library Celebration May 2

MAG News

Student Show Reception Doesn't Disappoint

The Student Show reception is always one of the most fun events on MAG's calendar, and this year was no different! Dozens of children were flanked by parents, grandparents, and siblings to celebrate their work hanging on our gallery walls!



Ali Selders, Milton Elementary School's art teacher attended the entire two-hour reception, greeting all her students with hugs and encouragement (*pictured left*).



After the show, members of the exhibit team wrote personal notes of thanks – with comments on their art -- to each child. Those notes were enclosed with each kid's artwork.



(*Pictured right: Marilyn Geiger, Lisa Laskay and Exhibits Director Jeff Crawford*).

New MAG Talks Focuses on Successful Summer Art Shows

Our next MAG Talks, scheduled for May 12 at 6 p.m. in MAG ArtSpace, will focus on how to make the most of your participation in the many, many art shows, fairs and festivals Sussex County offers during the season ahead. "Making the Most of Art Fairs & Festivals" will walk artists through preparation and successful selling, and will feature fellow artists sharing their tips. Please join us for this "insiders' look!"

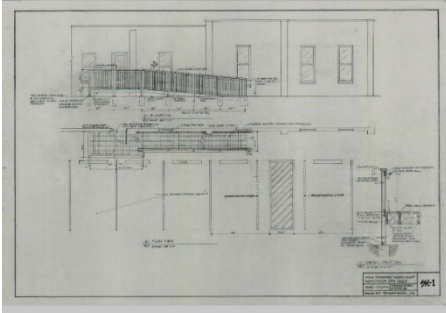


Reminder: Pallet Village Hosts Pre-Mother's Day Art & Craft Fair

Our friends at Pallet Village are hosting an art and craft fair on Saturday, May 9, 10 a.m.- 4 p.m. Approximately 20 artist tables – including MAG artists -- will be placed throughout the village, as well as occupy the community center.

Please come share in the fun!

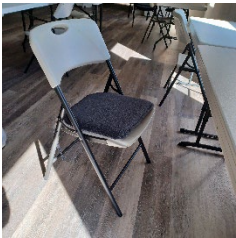
Work Continues at MAG ArtSpace



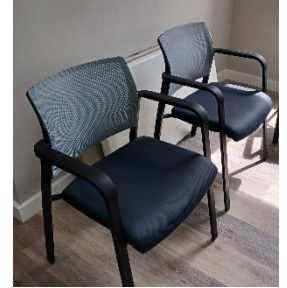
MAG is getting closer to building the handicap ramp at MAG ArtSpace! Member Richard Fanelli, a recently retired architect, kindly prepared architectural drawings of the proposed ramp (*pictured left*). The drawings have been submitted to the Town of Milton for approval.

Our landlord approves of the project, and local contractor, Frank McDermott, is ready to go, as soon as we get the okay from the town. Stay tuned for more developments!

Our accessibility work continued this month with the purchase of armed chairs for ArtSpace. These chairs are for those students who need the support of arms to stand up. Four chairs are currently available, with plans to purchase at least four more for ArtSpace and four for our Federal Street gallery. We trust that our able-bodied members will defer to the needs of fellow students/members who require the accessibility chairs.



Thanks to Marcia Sabo Williams, who donated four chair cushions (*pictured left*) to help make our standard ArtSpace chairs more comfortable!



Help Beautify ArtSpace!

If you've been in ArtSpace, you know that the brand, new walls are bare. To fill those new, blank walls with art, we are hoping our artists will each grab an old frame or a picture mat to paint, doodle or otherwise decorate, with the plan to fill the wall separating the classroom from the smaller storage room with a collection of frames and mats! When your piece is completed, just drop it at the gallery or at ArtSpace, and we will hang it! Lynda Rae Gannon has started the project with her doodled mat (*pictured right*), but it needs company!



Milton New Music & Wind Fest on May 30



The popular Milton New Music & Wind Fest is scheduled for May 30 in the Park Street complex where our ArtSpace is located. This is the fourth year of the festival, and MAG artists will once again have the opportunity to set up tables to showcase and sell their work. We will use ArtSpace for artist tables in addition to outside tables. In case of rain, outdoor vendors can move inside!

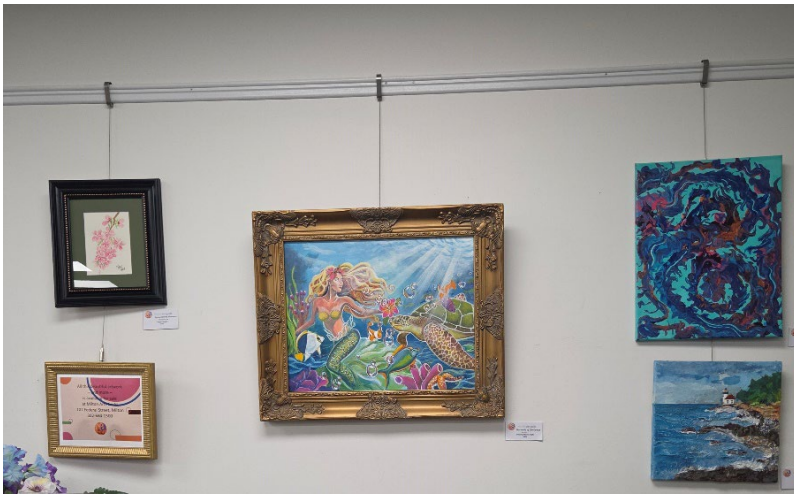
The festival is the brainchild of member Bill Warrell, who lives on the corner of Federal and Park Streets. The 2026 Fest will feature the music of jazz composer/saxophonist Julius Hemphill (1938-1995) performed by the Marty Erlich Trio and Hemphill Stringtet, and new works by Janel Leppin's Ensemble Volcanic Ash. Bill's 2026 painting "Delaware Celebrates the Sun," (*pictured left*) which depicts a scene from 2024 New Music & Wind Fest, on the occasion of musician Marshall Allen's 100th birthday. A Sign-Up Genius has been sent for artists to register for a \$10 table.

MAG To Participate In Library Event May 2

On May 2, Milton Arts Guild will participate in “Sussex County Children’s Book Festival at Milton Public Library. The event runs from 10 a.m.-2 p.m.

MAG will have a tent and table outdoors, where we will help youngsters decorate bookmarks. If you would like to participate, please contact Lynda Rae Gannon at 302-632-7868.

Eight Pieces of Art on Display at Milton Public Library



As part of our Gallery Around Town program, eight new pieces of artwork are hanging in Milton Public Library. Thanks to all the artists who chose to take advantage of this display and selling opportunity. And thanks to Lisa Laskay for hanging the exhibit. The library is one of two active Gallery Around Town exhibits MAG offers its artists. The other is Irish Eyes.

MAG is also looking other possibilities for Gallery Around Town or “pop-up” exhibits.



The work will hang at the library for three months, and can be purchased at the guild.





Making Connections: We Couldn't Make This Stuff Up!

A few weeks ago, our president, Lynda Rae Gannon, along with Lisa Laskay and Joyce Radnor, had a meeting in Milford with an artist who is instrumental in our art program at Pallet Village. The trio was early for the appointment, and decided to walk across the street to Mispillion Art League. As coincidence would have it, member Carol Bell was docent at Mispillion that day.

Looking around the gallery, Lynda Rae spotted a needle-felted owl, mounted on a piece of driftwood, that stole her heart. As time grew short, Lynda circled back and bought the owl....named "Barnaby."

A few days later, Lynda decided to call Cheryl, and looked at the business card that accompanied Barnaby. To her utter shock, Cheryl Beers lives in the very same house in Felton that Lynda lived in years ago!

Benevolent Programs Get a Lift

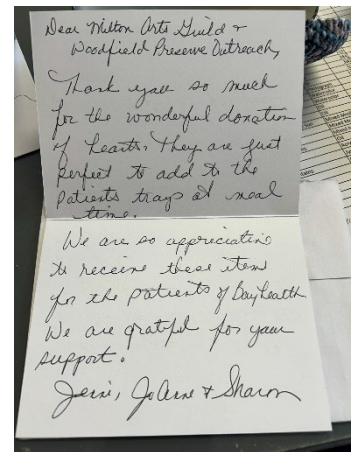


MAG's Sunshine Committee, which sends cards to members who are ill, injured, recovering from surgery, or suffering the loss of a loved one, has set up a donation box in the Federal Street gallery (pictured left), asking our card-making artists to think about donating some of their cards to brighten the day of their fellow members.

Our Hearts Need Art program has gotten a boost from our members and supporters at the Woodfield Preserve neighborhood in Milton! The residents there have been making cards regularly to be delivered on patients' meal trays at Beebe, Bayhealth and Veterans Administration hospitals. Thanks to our Woodfield members for keeping the program running, and for helping MAG improve the hospital stays of friends and strangers alike. The hospitals' volunteer teams are grateful for the support.

The volunteers at Bayhealth sent a thank you note (pictured right) that reads:

"Dear Milton Arts Guild and Woodfield Preserve Outreach: Thank you so much for the wonderful donation of hearts. They are just perfect to add to the patients' trays at meal time. We are so appreciative to receive these items for the patients of Bayhealth. We are grateful for your support."



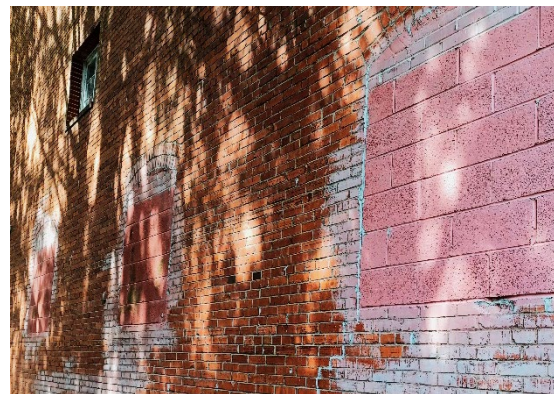
The MAG "hearts table" is set up at the rear of the Federal Street gallery, near the kitchen door. When you stop in the gallery, take an extra minute to design a heart!

MAG To Beautify Strawberry Alley



In early May – weather allowing -- three Milton Arts Guild artists will begin painting murals on the bricked up “windows” on the side of our 107 Federal Street gallery, along Strawberry Alley.

Jeff Crawford has gotten the permission of our landlords and the town to set up scaffolding so he, Randi Meredith and Michael Ng can get to work on beautifying those windows (*pictured right*) with playful murals!



New Procedures for Exhibit Promotional Photographs

The exhibits team tried a new procedure for promotional photos before intake for “Freewheelin.” In past shows, the exhibits committee had set up a special day for artists to bring their pieces to the gallery to be photographed for use in this newsletter, the show program, and with The Cape Gazette. For “Freewheelin,” the team decided to have artists take their own photos at home and send them to Jeff Crawford at jcraw5659@gmail.com, which worked very well. The exhibits team has decided that this will become the norm for future shows. Please refer to the show calendar (*under MAG Shows in the newsletter*) for photo deadlines, which are typically two weeks before intake to accommodate the Gazette’s publication schedule.

Biggs Museum Issues Call for Member Exhibition Entries



The Biggs Museum of American Art in Dover has put out a call for entries into its 2026 Members Exhibition, which will run on the museum’s third floor from July 9-September 6, 2026.

Entries are due on May 26, and up to three works can be entered. All media are eligible, and must be original works. All artwork must be for sale. The Biggs will take a 30% commission for all sales. The entry fee is \$15.

There are other eligibility requirements that can be found [here](#). If you are not currently a member of Biggs Museum, you may become a member prior to May 26 and be eligible to show your work....for FREE with an Explorer membership! To join, and to look at other levels of membership, visit the membership page [here](#).

Upcoming MAG Dates:

May 4: Sketch Club, 10 a.m.-noon, Federal Street gallery. Free. Public is welcome.

May 6: Gallery Intake, 3-6:30 p.m., Federal Street gallery. A Sign-Up Genius will be sent to reserve a spot!

May 12: MAG Talks: "Making the Most of Art Festivals & Fairs," 6-7:30 p.m., MAG ArtSpace, 9 Park Street, Milton. All are welcome!

May 18: Sketch Club, 10 a.m.-noon, Federal Street gallery. Free. Public is welcome.

May 19: "Mimic the Masters" photos due! Send a photo of your exhibit entry to Jeff Crawford at jcraw5659@gmail.com.

May 31: Milton New Music & Wind Fest, 2-9:30 p.m., 612 Federal Street (Park Street complex), Milton

Board of Directors Highlights

The Board of Directors met on Thursday, April 9, and continued its review of MAG's Five Year Strategic Plan, ensuring that the guild is on target to meet the milestones developed for 2026.

The Board unanimously agreed to purchase four accessibility chairs for ArtSpace to accommodate students who need armchairs. The plan is to purchase a total of eight chairs for ArtSpace and four for the Federal Street gallery.

In addition, the board voted to join the Delaware Arts Alliance, which lobbies legislators and policymakers to fund the arts in Delaware.

Board member Annette Babich presented a sample survey MAG will send to Milton residents, asking for input in classes and events. Board member Alan Margin provided the board with options for upgrading our email system (currently Gmail) to allow larger mailing lists and a broader range of mail options. And Board member, Memo Faraj, who has a background in merchandizing agreed to do a gallery review and make recommendations (which he has subsequently done).

The board will meet in the Federal Street gallery on Thursday, May 14.



New Members

- ❖ Mayra & Gabriel Jimenez
- ❖ René Daguerre-Bradford
- ❖ Patricia Thomas
- ❖ Helen Thomas-Goode
- ❖ Hugh Thomas
- ❖ Linda Thomas
- ❖ Linda Gebo
- ❖ Anthony (Tony) & Bridget Albano



We're glad you joined us!

MAG Shows



“Freewheelin’ Boasts 52 Entries

The 52 pieces of our new show, Freewheelin’, are now hanging in the gallery. Freewheelin’ is our first “artist choice” exhibit this year and highlights the talents and diversity of the 34 artists who submitted pieces for the exhibit. (Pictured left: “Assateague View,” by Sue Marano)

The reception was well attended, despite dreary weather, and the first sale of brand new show was

Colleen O’Brien’s “Flowing Thoughts.” Congratulations Colleen!



The show runs through June 2.

2026 Show Schedule

| Show Title | Run of Show | Photos | Intake | Sunday Reception | Comments |
|--------------------------------------|------------------|--------|--------|-------------------|--|
| Mimic the Masters (Judged) | 6/3-7/21 | 5/19 | 6/2 | 6/7; 3-5 p.m. | Make an existing masterpiece your own or paint in the style of a master. |
| Coastal Clues | 7/23-9/1 | 7/7 | 7/21 | 7/26; 3-5 p.m. | Find your favorite coast scene. |
| Monochromatic | 9/2-10/13 | 8/25 | 9/1 | 9/6; 3-5 p.m. | Pick a color and make the shades work! |
| Wild Card (Judged) | 10/28-11/24 | 10/14 | 10/27 | 11/1; 3-5 p.m. | Artist’s Choice! Do one for the judges! |
| This is Joy | 11/25- 1/5/26 | 11/1 | 11/24 | 11/29 2-5 p.m. | Bring the joy to the season. |



Lynda's Lines

Making Connections

In the last few months the overriding theme for our MAG thoughts and actions has been filling spaces. We are quickly turning over shows through interesting curves, to student highlights and freewheeling antics. It is a busy time for our exhibits committee, but they always charge ahead and come out smiling.

The new ArtSpace calendar is filling up with more classes and more instructors both new and tried and true. Our list of Kids' Summer Classes is full of new and different art opportunities. We are looking forward to filling our new digs with children's laughter and creativity.

Recently, a member expressed an interest in collaborating with possible senior centers. A week after meeting with that member we met with a senior center looking for a special program for their seniors. These future connections will help us fill in even more of our spaces.

In the midst of all our changes we are trying to be more effective in our communication. Our new website has been crafted around our needs and wants. We anticipate an uptick in volunteer efforts and interest in our common goals for artists and non-artists alike.

Let me invite you to be part of this formidable growing group of volunteers. Please feel welcome joining us as we enthusiastically make connections, filling and refilling our spaces.

--Lynda Rae Gannon

Upcoming 2026 Classes

May



Shell Flower Sailor's Valentine with Kim Brown

Friday, May 1

11:00 a.m.-2:00 p.m.

\$80 members; \$90 non-members



Sewing Machine Basics Workshop with Renee Brown

Saturday, May 2

10:00 a.m.-1:00 p.m.

\$40 members; \$50 non-members



Tech/Book Bag Workshop with Renee Brown

Monday, May 5

5:30 p.m.-8:30 p.m.

\$55 members; \$65 non-members



Spontaneous Watercolor Painting with Gerilyn Gaskill

Saturday, May 9

9:30 a.m.-12:30 p.m.

\$50 members; \$60 non-members

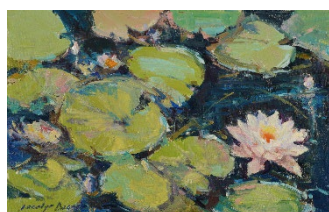


Watercolor Beach Waves with Gerilyn Gaskill

Tuesday, May 12

9:30 a.m.-12:30 p.m.

\$50 members; \$60 non-members



Plein Air with Jacalyn Beam

Wednesday, May 13

9:00 a.m.-3:00 p.m.

\$75 members; \$85 non-members



Hydrangea Textured Acrylic Canvas with Heather Capezio

Thursday, May 14

5:30 p.m.-7:30 p.m.

\$45 members; \$55 non-members



Pet Portraits with Richard Fanelli

Four part-class

Thursdays, May 14, 21, 28 and June 4

10:00 a.m.-1:00 p.m.

\$140 members; \$155 non-members



The practice of Kintsugi with Diane Kessler

Saturday, May 16

10:00 a.m.-12:00 p.m.

\$50 members; \$60 non-members



Wet Felting – Large Vessel with Sharon Davis

Wednesday, May 20

9:00 a.m.-12:00 p.m.

\$60 members; \$70 non-members



Seashell Tree with Heather Capezio

Friday, May 22

1:00 p.m.-3:00 p.m.

\$70 members; \$80 non-members

Classes will be held at 9 Park Street, Milton

Summer Kids Classes

The kids education team – spearheaded by Eileen Ferro – has our summer program for kids ready to go. If you have children, grandchildren, neighbors, or family visiting for the summer, please pass along the information.

July 6 - 10, Grades 1 – 4

- July 6 Card Making with Beth Hammond
- July 7 Acrylic Painting with Diane Golrick
- July 8 Mini Puppet Theater with Renee Brown
- July 9 Dr. Suess with Pauline Powell
- July 10 Aborigine Painting with Diane Golrick



July 13-17, Grades 5 - 8

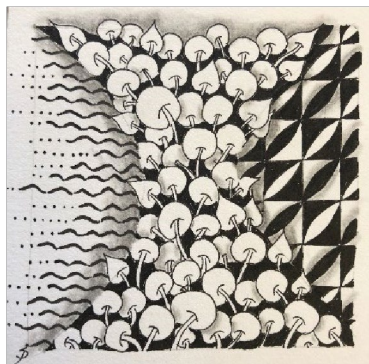
- July 13 Wet Felted Wall Hanging with Sharon Davis
- July 14 Acrylic Painting with Diane Golrick
- July 15 Paper Collage and Acrylic Painting with Kathy Fessenbecker
- July 16 Wet Felting a Vessel with Candace Barbaccia
- July 17 Dragon's Eye Embossed Egg with Patty DiCampli



***All classes are held at MAG ArtSpace, 9 Park Street, from 10:00 a.m. - noon
Classes are \$25 each with all materials included.***

Recurring Online Classes & Merriment

Visit our website (www.miltonartsguild.org) to register for any recurring class or event.



Drop-in Zoomdoodle

Two sessions per week

Every Tuesday and

Thursday 3:30-

4:30 p.m.

\$15 (for a full month's sessions!)

Open Studio

Join friends on Friday mornings for a two-hour Open Studio in-person at the *Federal Street Gallery*.

Need some feedback on a project?
Inspiration? Crave connection? This is
the place for you!

Every Friday of the month 10 a.m.-noon FREE!



Just For Laughs...



Agnes
By Tony Cochran

MAG Board of Directors

Lynda Rae Gannon, President

Jeff Crawford & Joyce Radnor, Vice Presidents

Sue Marano, Treasurer

Donna Ketcheson, Secretary

Susan Donohoe, Education

Cynthia Schmidt, Gallery Group

Sue Dutton, Past President

Barry Goodinson, Board Recruitment

Annette Babich, Director

Alan Margin, Director

Memo Faraj, Director

Scott Richardson, Director

Register with Delaware Division of the Arts to join their Artist's Roster. Go to <https://arts.delaware.gov>, find the heading "artist" on the upper right corner of the Delaware Artist Roster home page, and click on "Register" to create an application for a new listing or "Log In" to edit existing listings.



MAG is supported in part by a grant from the Delaware Division of the Arts, a state agency, in partnership with the National Endowment for the Arts. The Division promotes Delaware arts events on www.DelawareScene.com.